



Geophysics
International

PETRO-SONDE RESPONSE TO SKINNER SAND

Petro-Sonde Survey - Oil and Gas Division

LOCATION. Creek County, Northeast Oklahoma.

OBJECTIVE OF THE PETRO-SONDE SURVEY. To determine the depth, thickness and content of the Skinner Sand across an undrilled lease.

GEOLOGY. Middle Pennsylvanian age sand deposited in a fluvial point bar environment. Sand can vary in thickness from 0 to 50 feet throughout the area. Hydrocarbon accumulations occur in both structural and stratigraphic traps.

INFORMATION AVAILABLE. IE-Logs for calibration wells.

CONCLUSIONS AND COMMENTS. The Petro-Sonde survey accurately identified the depth, thickness and fluid content for the Skinner Sand at this drillsite. The survey reading was taken prior to drilling the well I and identified 14 feet of Skinner oil sand from 2582 to 2596 Feet. Figure 1 shows the correlation between the Petro-Log data and the dual induction log.

The well was completed in the Skinner Sand as a producing oil well with an initial production rate of 240 bbl and 50 MCFGD.

COMPARISON OF PETRO-LOG GENERATED AT THE SURFACE AND DUAL INDUCTION LOG.

DUAL INDUCTION LOG

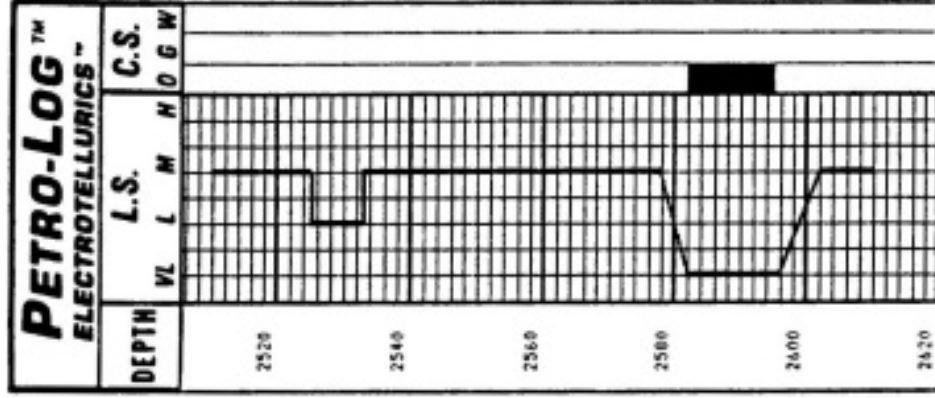
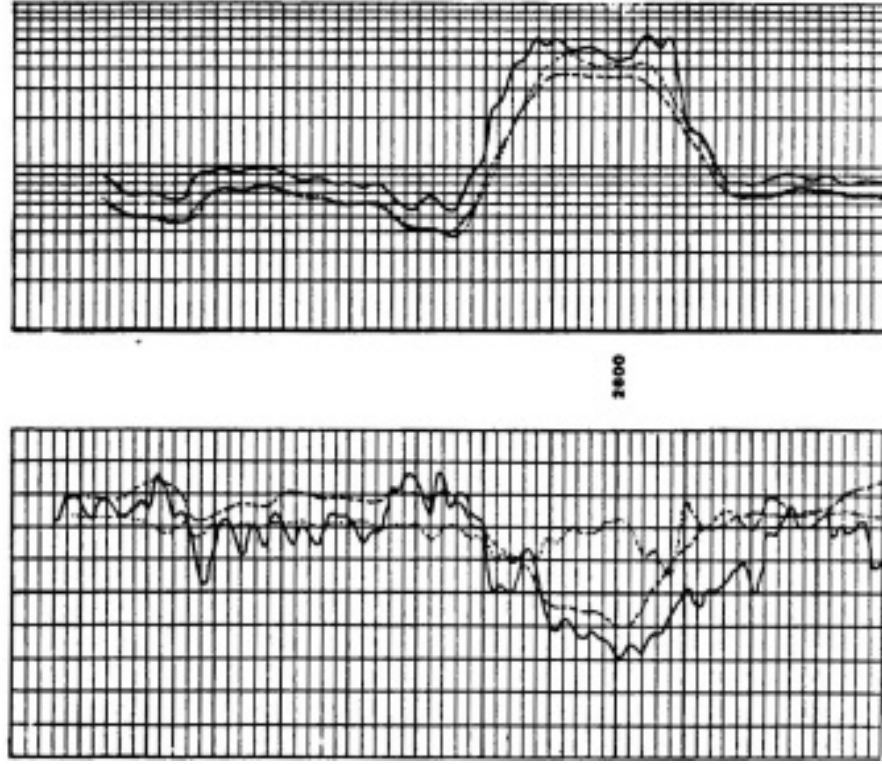


FIGURE 1.